

ElegantJ Indicator & Gauges

Installation Guide – Version 1.0.03

Table of Content

1	<u>INSTALLATION AND REGISTRATION</u>	3
1.1	PREREQUISITE	3
1.2	INSTALLATION PROCEDURE	3
1.2.1	INSTALLING ON WINDOWS 95/98	3
1.2.2	INSTALLING ON WINDOWS NT/2000	3
1.2.3	INSTALLING ON UNIX/LINUX	4
1.3	USING WITH DIFFERENT IDES	4
1.3.1	BORLAND JBUILDER	4
1.3.2	IBM VISUAL AGE	7
1.3.3	FORTE4JAVA	11
1.3.4	ORACLE JDEVELOPER	13
1.4	GETTING REGISTERED	15
1.4.1	HOW TO PURCHASE	15
1.4.2	USING WITH GRAPHICAL USER INTERFACE OF IDE	15
1.4.3	USING DIRECTLY WITH SOURCE CODE	15
2	<u>PRODUCT AND SUPPORT INFORMATION</u>	16

1 Installation and Registration

1.1 Prerequisite

Before installing ElegantJ Beans, please ensure that your computer system and development environment are setup and working as per expectations. Person evaluating ElegantJ Beans is expected to be able to write and execute simple JAVA applications.

We provide free pre-purchase technical support to help you complete process of evaluation. Mail to support@elegantJBeans.com for pre-purchase technical support.

To be able to use ElegantJ Beans, your computer systems are required to have -

- An IDE that supports Java 2 or higher, or
- JDK 1.2.2 or higher

Please note that evaluation version of ElegantJ Beans cannot be deployed for commercial, non-commercial or any other purpose in any possible way. You may not build any software, applets or applications for distribution with evaluation version of ElegantJ Beans.

This evaluation version is to be solely used by you to evaluate suitability of ElegantJ Beans for your needs. For more details please go through License Agreement.

1.2 Installation Procedure

On extracting EJGauges.zip, following directories will be created -

- Directory [jars] contains Jar file(s)
- Directory [demos] contains demo application(s) with source code
- Directory [docs] contains User Guide and Java API

1.2.1 Installing on Windows 95/98

To include ElegantJ Beanery in CLASSPATH, add following statement to your autoexec.bat file,

```
set CLASSPATH= %CLASSPATH%; C:\ELEGANTJ\<ELEGANTJ_BENARY_HOME>\jars\<ELEGANTJ_BEAN>.jar;
```

Restart Windows to make changes effective.

1.2.2 Installing on Windows NT/2000

Go to Control Panel and select System. You will find environment variables on Environment tab in Windows NT systems and on Advanced tab in Windows 2000 systems. Find CLASSPATH environment variable or create it.

To include ElegantJ Beanary in the CLASSPATH, specify or add following value for variable -

```
[EXISTING-CLASSES]; C:\<ELEGANTJ_BEANARY_HOME>\jars\  
<ELEGANTJ_BEAN>.jar
```

1.2.3 Installing on UNIX/Linux

Before you begin using ElegantJ Beanary, you must manually configure CLASSPATH environment variable. CLASSPATH must point to the location of classes and installation directory. For example, to set CLASSPATH for ElegantJ Beanary,

```
setenv CLASSPATH:/usr/local/<ELEGANTJ_BEANARY_HOME>/jars/  
<ELEGANTJ_BEAN>.jar;
```

If you are using Bourne Shell, commands are,

```
CLASSPATH= $CLASSPATH:./usr/local/<ELEGANTJ_BEANARY_HOME>/jars/  
<ELEGANTJ_BEAN>.jar:export CLASSPATH
```

1.3 Using with Different IDEs

1.3.1 Borland JBuilder

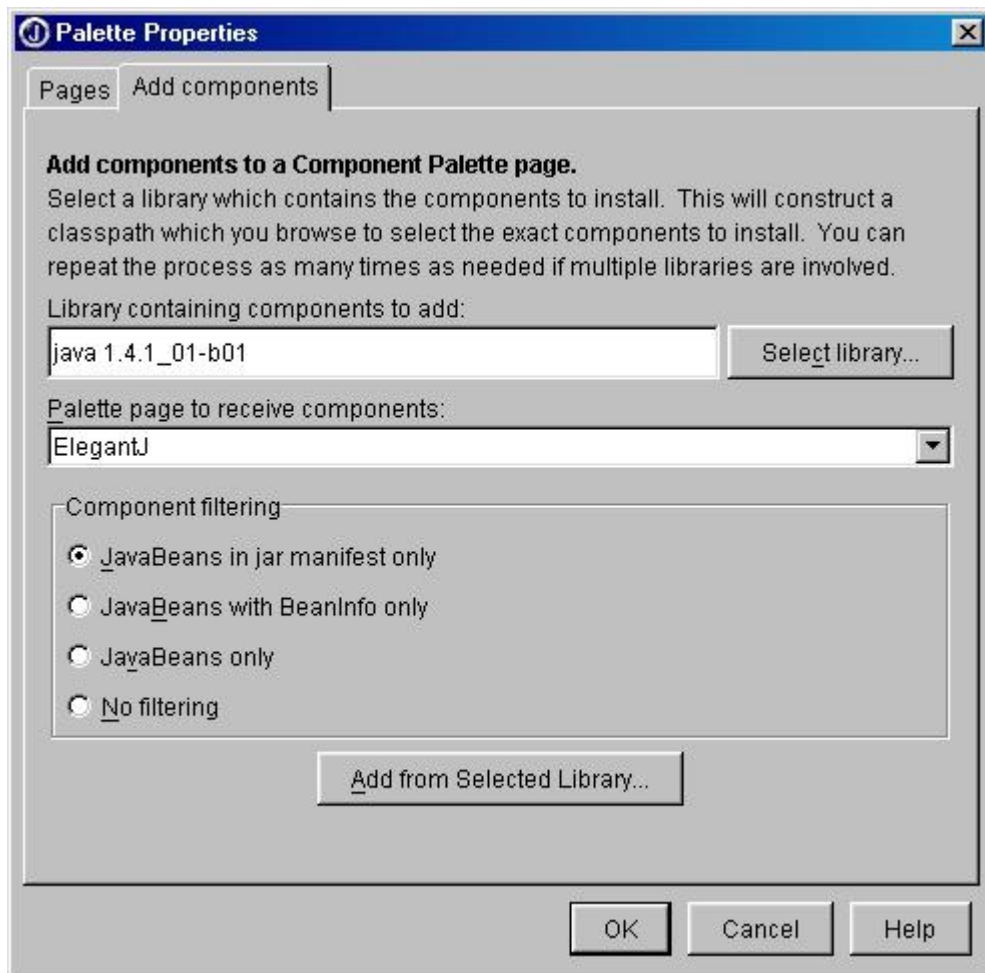
Follow the steps given below to create a new category and install Bean into Borland JBuilder.

Create a New Category

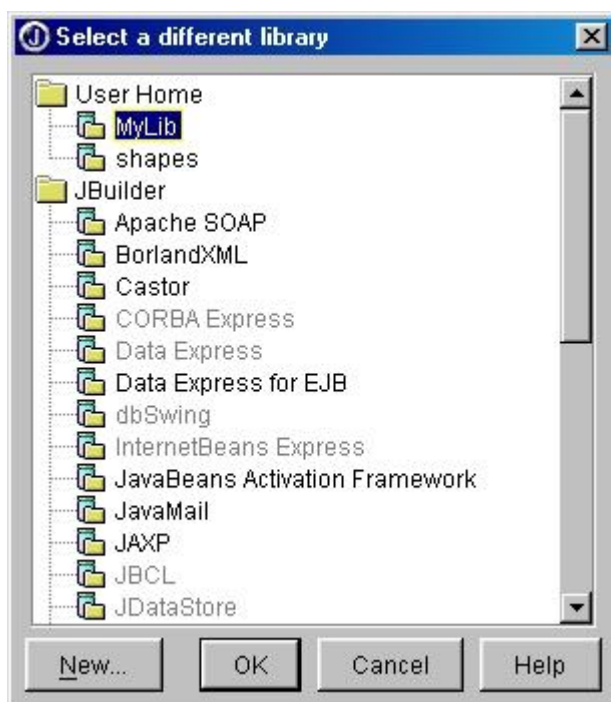
- Click menu **Tools > Configure Palette**. It opens **Palette Properties** dialog box
- Click **Add** button. It opens **Add Page** dialog box. Specify name (for example ElegantJ) and click **OK**. New category gets created.

Create New Library and Install/Import Bean

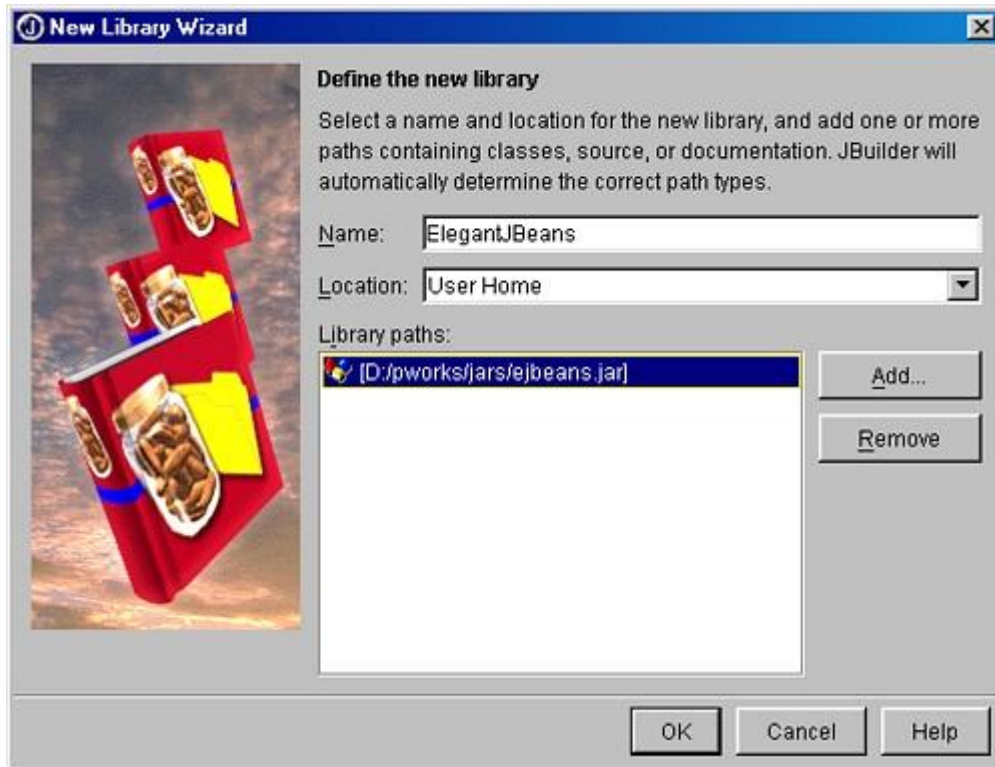
- On **Palette Properties** dialog box, click **Pages** tab. Select newly created page (for example ElegantJ).



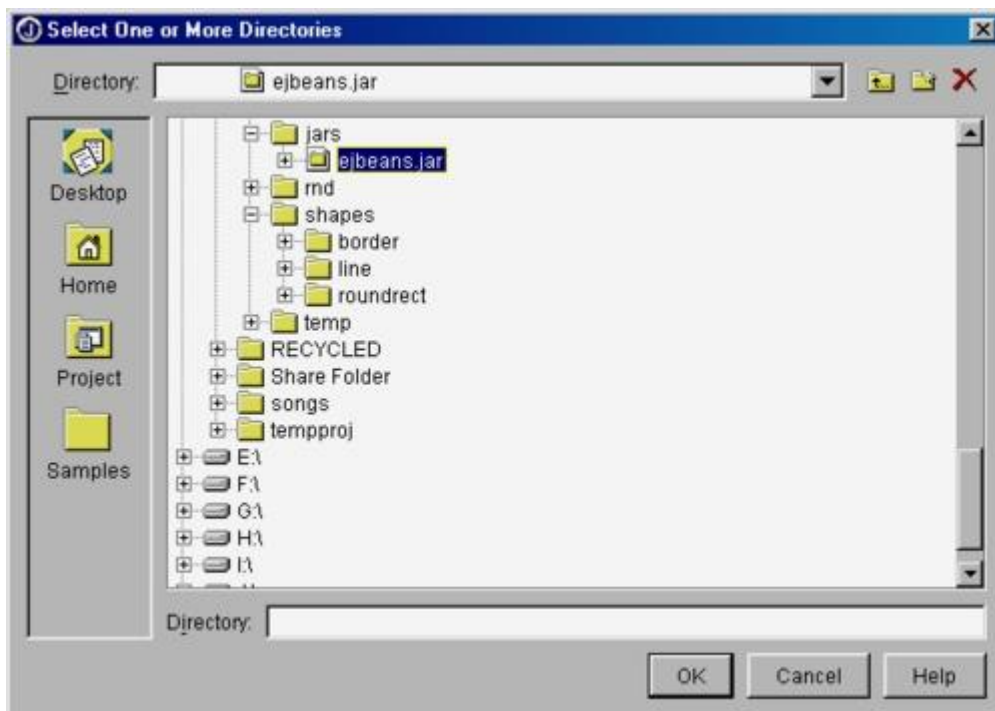
- Click button **Select Library**. **Select a Different Library** dialog box opens.



- Click **New** button on **Select a Different Library** dialog box. **New Library Wizard** dialog box opens.
- Specify name for library and click **Add** button. **Select One or More Directory** dialog box opens.



- Select directory where jar files are located, or select jar file to be imported. Click **OK**. Dialog box gets closed and **New Library Wizard** dialog box appears in front.



- Click **OK** on **New Library Wizard**. It opens **Select a Different Library** dialog box.
- Confirm that newly created library is selected. Click **OK**. It opens **Add Components** under **Palette Properties**.
- Click **Add** from **Selected Libraries** button. It opens **Results** dialog box, click **OK**.
- Results dialog box disappears. Click **OK** on **Palette Properties** dialog box.
- Beans are ready to use.

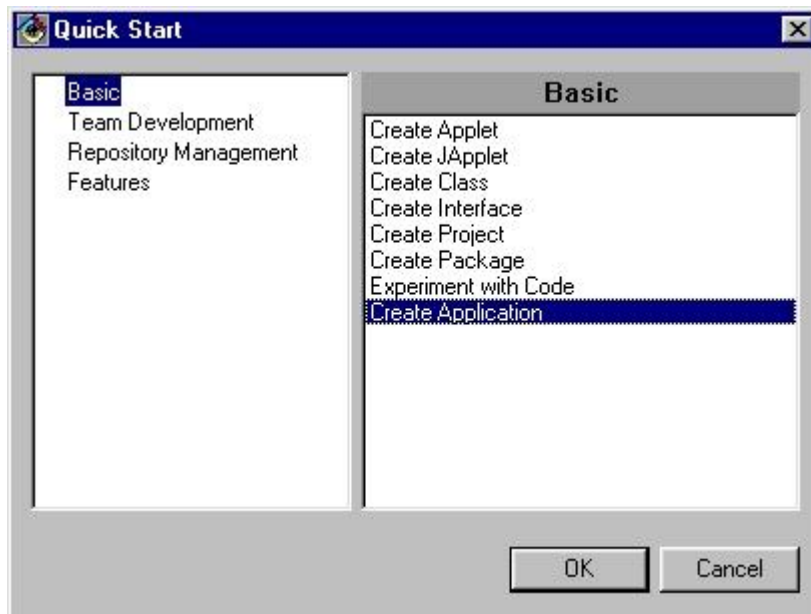
1.3.2 IBM Visual Age

Follow the steps given below to create an application in VisualAge and import ElegantJ Bean into the application.

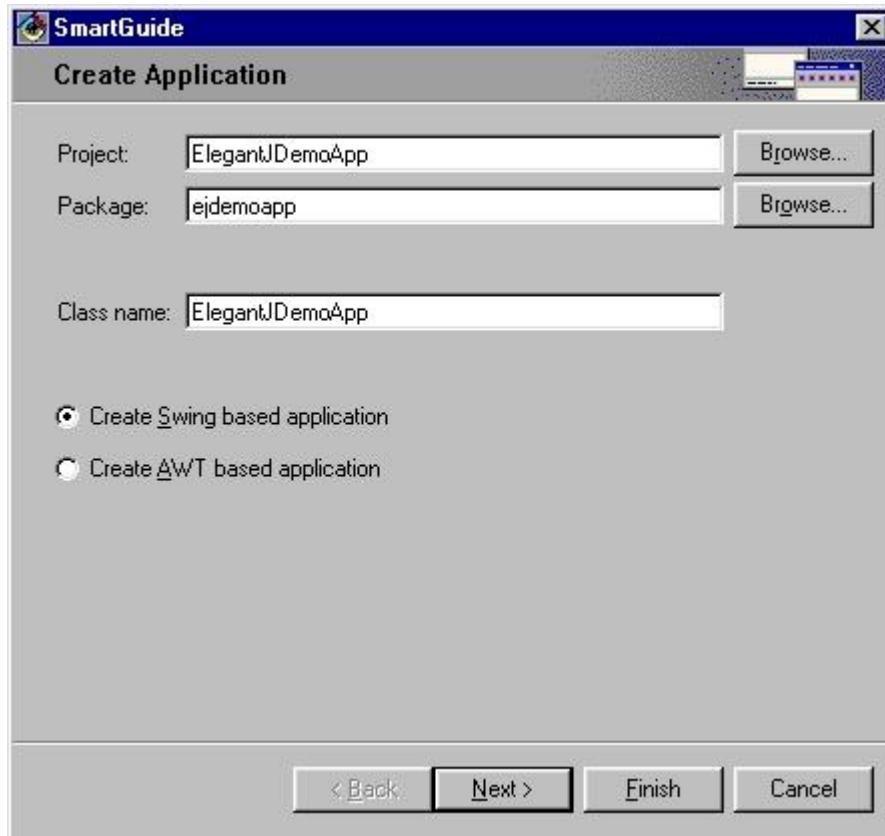
Create an application

Open IBM VisualAge to work as Administrator.

- Click menu **File>QuickStart**. It opens **Quick Start** dialog box.



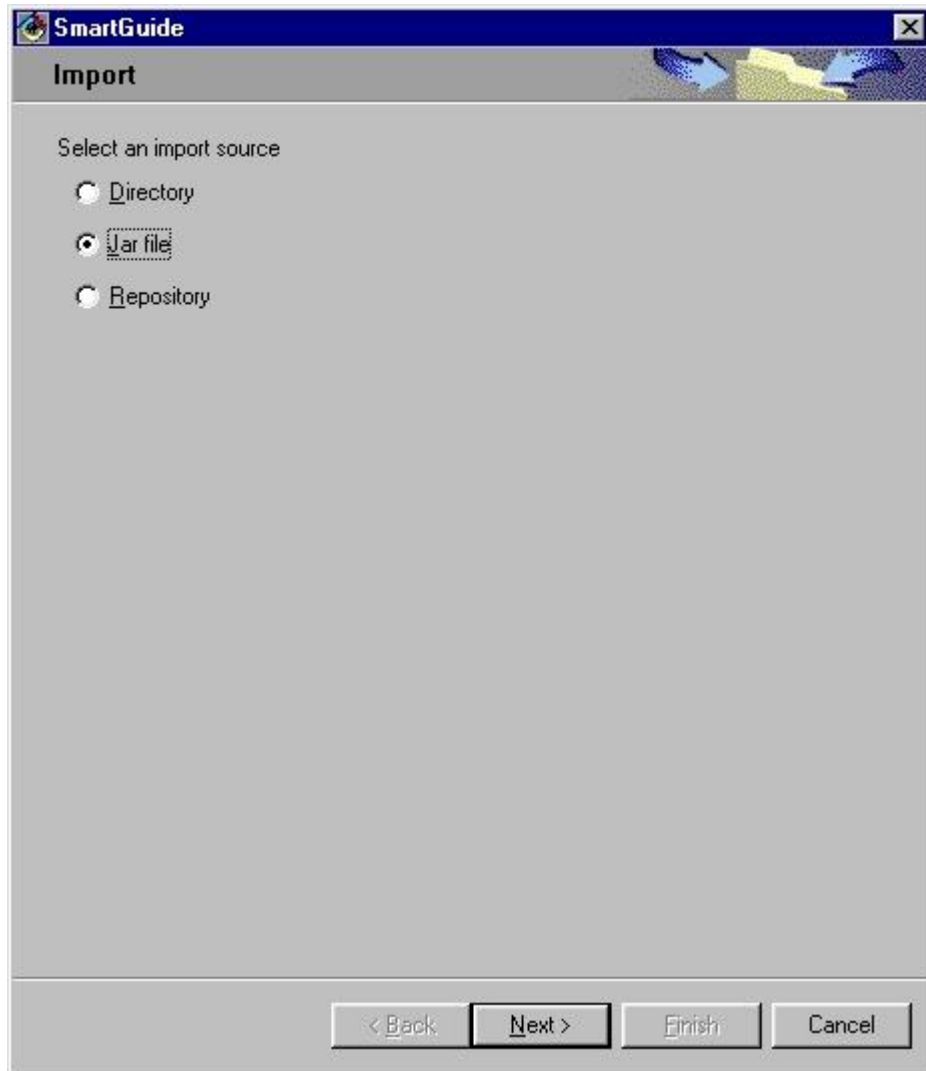
- On Left pane, click **Basic**. On right pane, click **Create Application**. Click **OK**. It opens **Create Application** step of **SmartGuide** dialog box.
- In **Project** entry box, specify **Project** (for example, ElegantJDemoApp). In **Package** entry box, specify package name (for example, ejdemoapp). In **Class** entry box, specify Class name (for example ElegantJDemoApp).
- Select "Create Swing based application" if you are working with JFC. Select "Create AWT based application" if you are working with AWT.



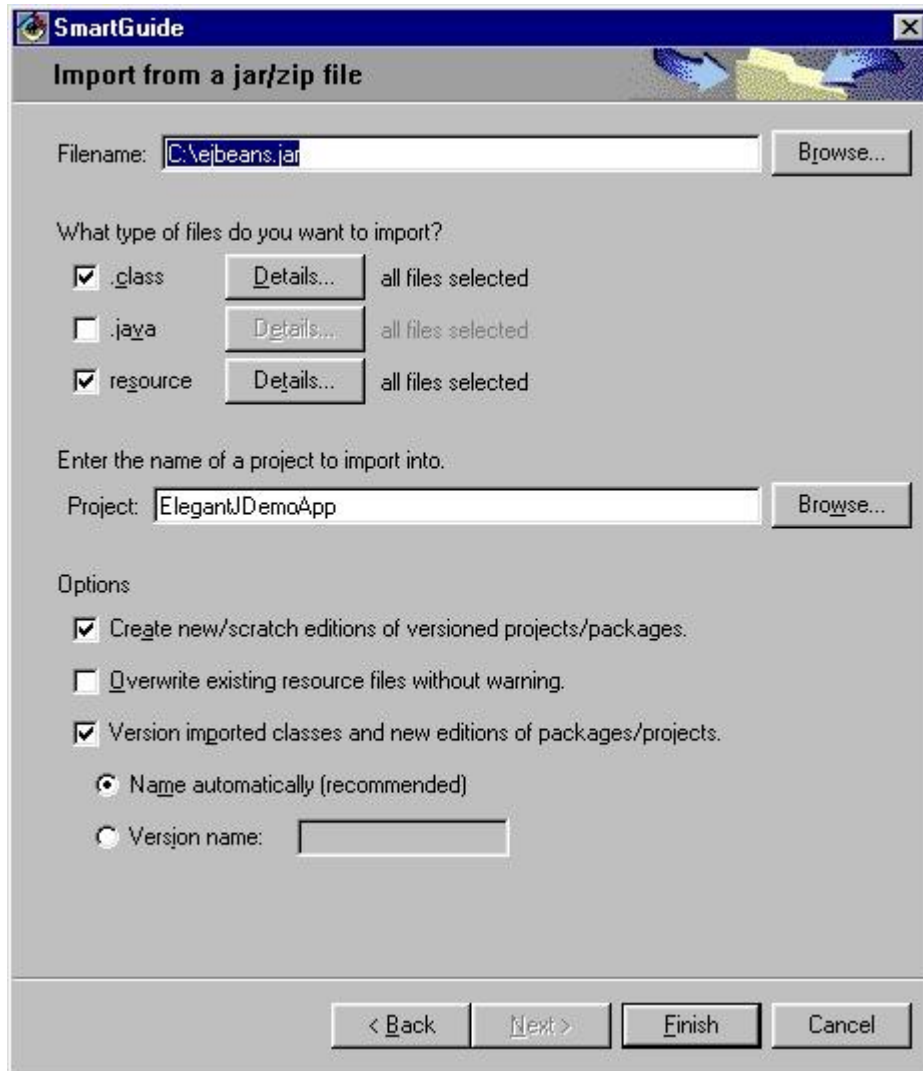
- Click **Finish** button. Application will be created and it will open new window for ElegantJDemoApp.

To Import Beans in the Application

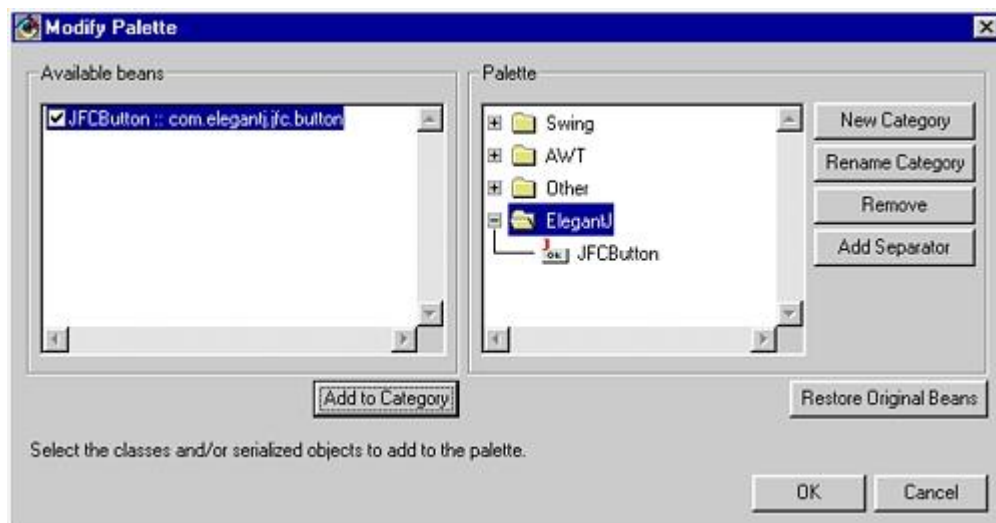
- In ElegantJDemoApp (the example used here) application window, click menu **File > Import...** . **Import** dialog of **SmartGuide** opens.



- Choose **Jar file** as import source. Click **Next** to proceed.
- From **Jar/Zip file** dialog box, browse location and get jar file in **Filename** entry box. On the same dialog box, confirm that **.class** and **resources** options are selected under **What type of files do you want to import?**



- Click **Finish** button. It opens **Modify Palette** dialog box.
- To create a new category, click **New Category** button. Specify name of category (for example, ElegantJ). Confirm that newly created category is highlighted, select bean you want to import from **Available Beans** area of the dialog box.
- Click **Add To Category** button to complete the process. Click **OK**.



- Beans are ready to use.

Note: Microsoft, IBM, VisualJ, PowerJ, JBuilder, Borland, Forte, NetBeans, VisualAge, JDeveloper, SUN Microsystems, ORACLE, JAVA, WINDOWS, Internet Explorer, Netscape, Opera, Adobe, PDF are not intended to indicate any specific relation to Elegant MicroWeb Technologies Pvt. Ltd. or ElegantJ or ElegantJ Beans. The corporation who own these trademarks are not related or connected with Elegant MicroWeb Technologies Pvt Ltd or ElegantJ or ElegantJ Beans in any way. The respective corporations own these trademarks. They have only been mentioned in this and other documentations to demonstrate or support the use of these products with ElegantJ Beans or as related information. ALL TRADEMARKS ARE DULY ACKNOWLEDGED.

1.3.3 Forte4Java

Follow the steps given below to create a new category for ElegantJ Beans and add Beans to Sun Forte4Java.

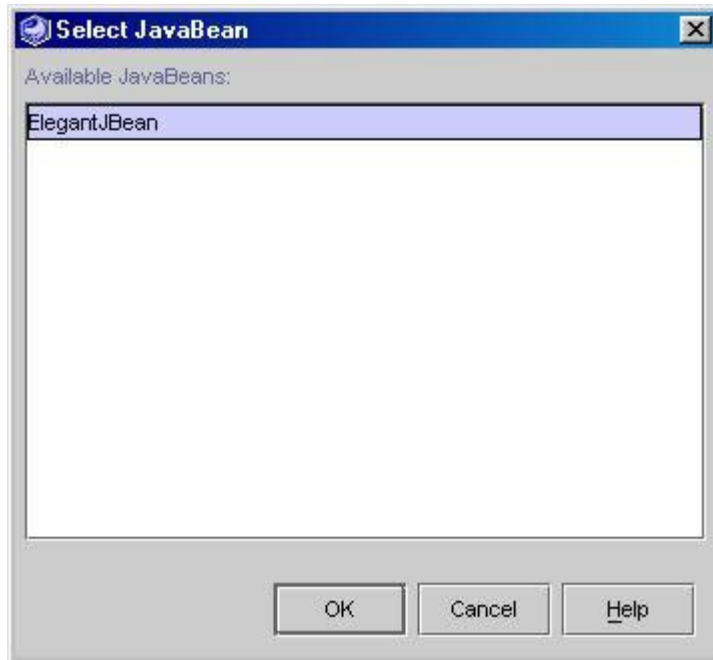
Create a new Palette Category

- To create a new Palette Category, right-click the mouse on Palette Categories tab. A context menu opens.
- Click menu option Create New Category. It opens New Palette Category dialog box. Specify Category name, for example - ElegantJ. Click OK. New category is created.



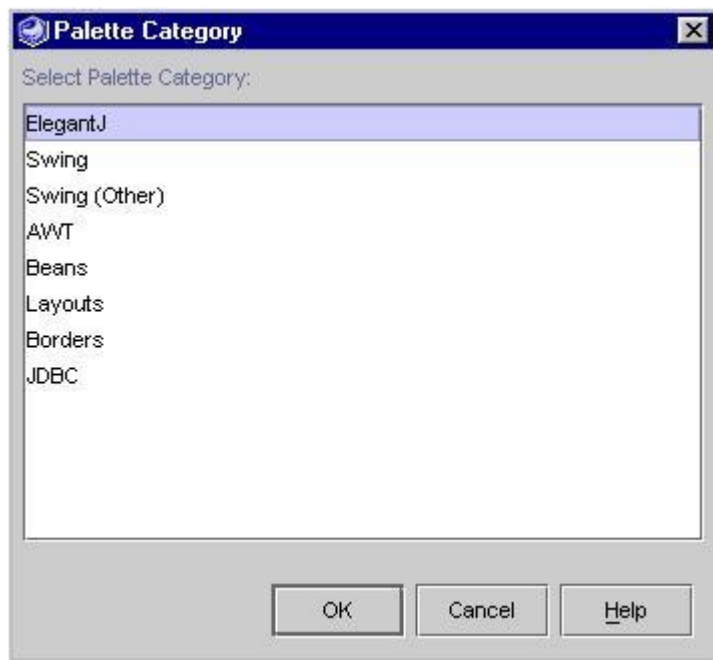
To import Beans

- Click menu **Tools > Install New JavaBean...** . It opens **Install JavaBean** dialog Box.
- Browse and select the jar file that you want to install/import.
- Click **OK**. It auto-detects beans available in Jar file and displays their names in **Select JavaBean** dialog box.
- Select the bean that you want to install.
- Click **OK**. It opens **Palette Category** dialog box, which lists newly added Category.



To add selected Beans into newly created category

- From **Palette Category** dialog box, select newly created category (example here, ElegantJ)
- Click **OK**. Beans will get installed under this category.



- Beans are ready to use.

Note: Microsoft, IBM, VisualJ, PowerJ, JBuilder, Borland, Forte, NetBeans, VisualAge, JDeveloper, SUN Microsystems, ORACLE, JAVA, WINDOWS, Internet Explorer, Netscape, Opera, Adobe, PDF are not intended to indicate any specific relation to Elegant MicroWeb Technologies Pvt. Ltd. or ElegantJ or ElegantJ Beans. The corporation who own these trademarks are not related or connected with Elegant MicroWeb Technologies Pvt Ltd or ElegantJ or ElegantJ Beans in any way. The respective corporations own

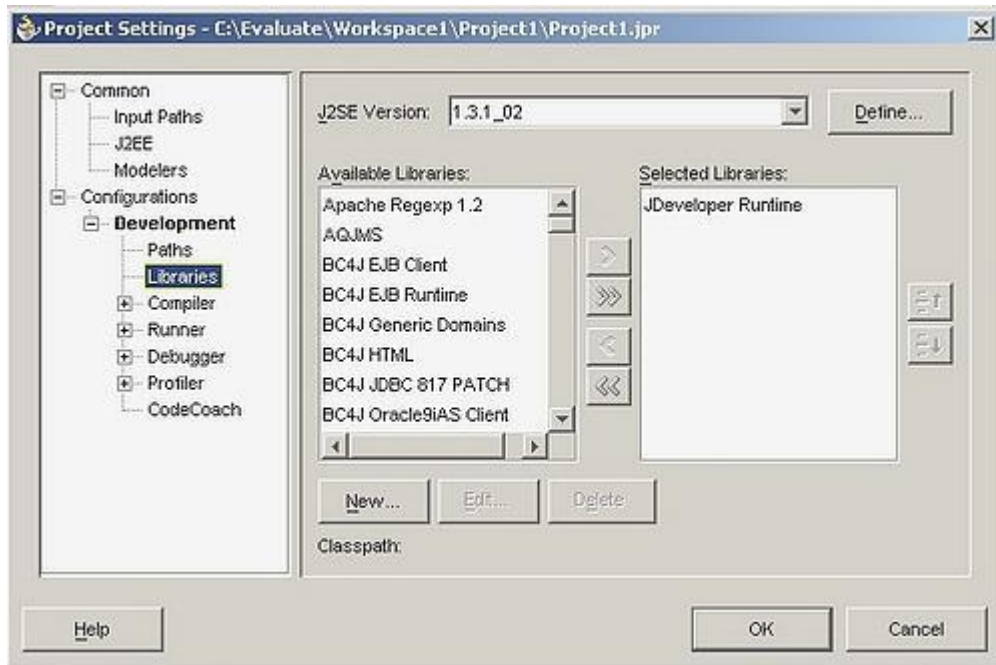
these trademarks. They have only been mentioned in this and other documentations to demonstrate or support the use of these products with ElegantJ Beans or as related information. ALL TRADEMARKS ARE DULY ACKNOWLEDGED.

1.3.4 Oracle JDeveloper

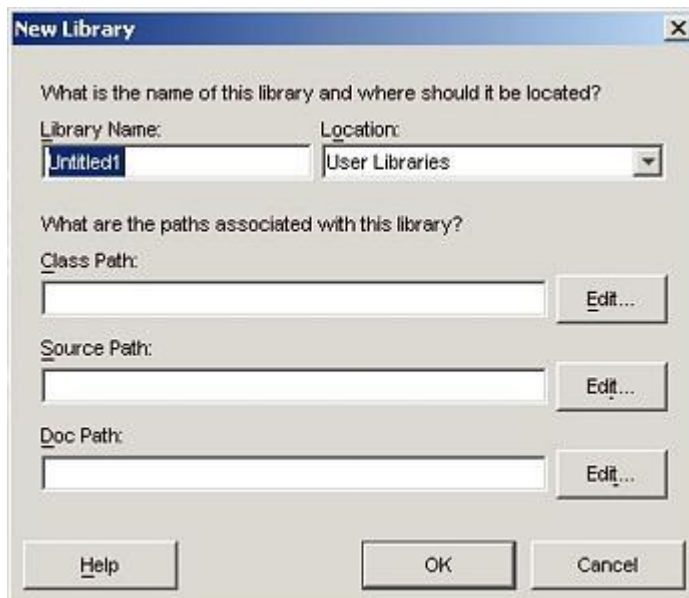
Follow the steps given below to import ElegantJ Beans in Oracle JDeveloper.

To Import beans into a project

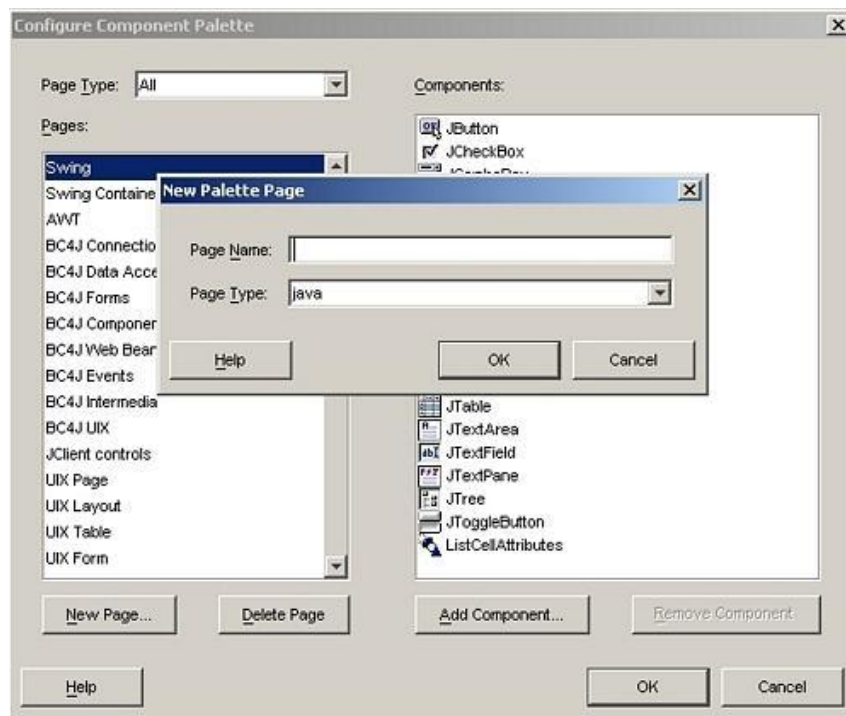
- Click menu Project > Project Settings. It opens Project Settings dialog box.



- Click **Libraries** entry appearing on the pane on left side.
- Click **New** button. It opens **New Library** dialog box.



- In **Library Name** entry box, specify Library name. In **Location** entry box, specify location where you want the library to be located. In **Class Path** entry box, specify path of jar file of Bean. Browse the location by clicking **Edit...** button if required.
- Click **OK**. The library you selected appears in **Available Libraries** list of **Project Properties** dialog box.
- Select the library you want and click > button to add it to **Selected Libraries** list.
- Click menu **Tools > Configure Component Palette**. It opens **Configure Component Palette** dialog box.
- To create a new palette page, click **New Page...** button. It opens **New Palette Page** dialog box. Specify **Page Name** and **Page Type**. Click **OK**. A new page with specified name will be created.



To add component to page

- On **Configure Component** dialog box, from **Pages** list, select the page and click **Add Component** button. It opens **Add JavaBeans** dialog box with available libraries.
- Select a library from **Library** combo box.
- Browse the hierarchy and select a component. It displays preview of icon for selected component. Click **OK**. It shows **Palette Confirmation** dialog box.
- Click **Yes** on **Palette Confirmation** dialog box to complete the process.
- Beans are ready to use.

Note: Microsoft, IBM, VisualJ, PowerJ, JBuilder, Borland, Forte, NetBeans, VisualAge, JDeveloper, SUN Microsystems, ORACLE, JAVA, WINDOWS, Internet Explorer, Netscape, Opera, Adobe, PDF are not intended to indicate any specific relation to Elegant MicroWeb Technologies Pvt. Ltd. or ElegantJ or ElegantJ Beans. The corporation who own these trademarks are not related or connected with Elegant MicroWeb Technologies Pvt Ltd or ElegantJ or ElegantJ Beans in any way. The respective corporations own these trademarks. They have only been mentioned in this and other

documentations to demonstrate or support the use of these products with ElegantJ Beans or as related information. ALL TRADEMARKS ARE DULY ACKNOWLEDGED.

1.4 Getting Registered

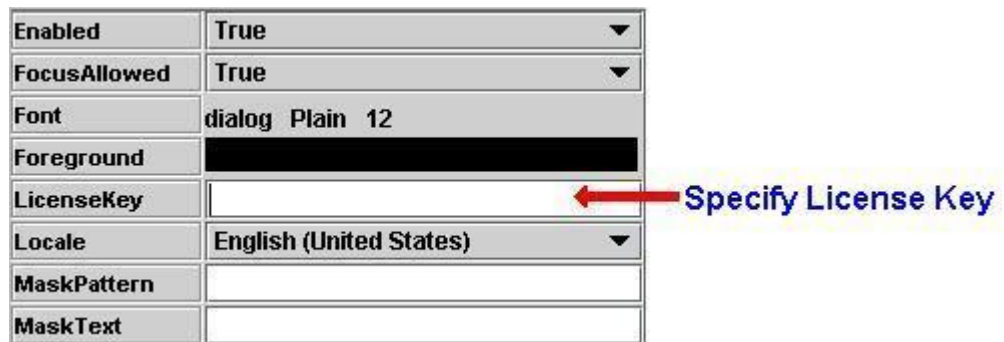
1.4.1 How to Purchase

You can purchase a license from our web site www.elegantJBeans.com
You can also contact our sales team sales@elegantJBeans.com

On purchasing a license, you will receive a mail having your license key.

1.4.2 Using with Graphical User Interface of IDE

While designing an application or an applet graphically in an Integrated Development Environment, you will find a property named LicenseKey along with other properties of the bean. Specify key (serial number) in LicenseKey property.



Note: Instead of typing the license key, we suggest you to copy the license key from mail and paste it at required place. Make sure that the selection does not have any leading or trailing spaces.

1.4.3 Using directly with source code

When you use the Bean within code, you need to set the key by providing value in setLicenseKey Method.

Note: Instead of typing the license key, we suggest you to copy the license key from mail and paste it at required place. Make sure that the selection does not have leading or trailing spaces.

```
ClassName object = new ClassName();  
object.setLicenseKey("LICENSE_KEY");
```

Example

```
AWTTree awtTree = new AWTTree();  
awtTree.setLicenseKey("LICENSE_KEY");
```

2 Product and Support Information

Product & Support Information:

- You can find more information about ElegantJ Indicator & Gauges and it's features on www.ElegantJCharts.com.
- If you looking for further support apart from this documentation, then you can purchase our support package from the website.
- Forward your sales related mail to sales@ElegantJCharts.com.

Feedback and Suggestions:

- We will be pleased to get your feedback as well as suggestions about our products.
- Forward any feedback or suggestions related mails to support@ElegantJCharts.com.