

# Installation Guide

Product Version 2.0.02  
Document Version 1.0.02

**ElegantJ Charts**  
Visualize THE Information Power



**Email:** [support@ElegantJCharts.com](mailto:support@ElegantJCharts.com)  
**Website:** [www.ElegantJCharts.com](http://www.ElegantJCharts.com)

© Elegant MicroWeb Technologies Pvt. Ltd.

<b>Document Information</b>	
<b>Document ID</b>	EJC-IG-0907-V1.0.02
<b>Version</b>	1.0.02
<b>Date</b>	02-Oct-07
<b>Recipient</b>	NA
<b>Author</b>	EMTPL

### **Statement of Confidentiality, Disclaimer and Copyright**

This document contains information that is proprietary and confidential to EMTPL, which shall not be disclosed, transmitted, or duplicated, used in whole or in part for any purpose other than its intended purpose. Any use or disclosure in whole or in part of this information without express written permission of EMTPL is prohibited.

Any other company and product names mentioned are used for identification purpose only, and may be trademarks of their respective owners and duly acknowledged.

---

## Table of Content

---

<b>1</b>	<b>INSTALLATION &amp; REGISTRATION</b>	<b>4</b>
<b>1.1</b>	<b>PREREQUISITE</b>	<b>4</b>
<b>1.2</b>	<b>INSTALLATION PROCEDURE</b>	<b>4</b>
1.2.1	INSTALLING ON WINDOWS 95/98	4
1.2.2	INSTALLING ON WINDOWS NT/2000/XP	4
1.2.3	INSTALLING ON UNIX/LINUX	4
<b>1.3</b>	<b>USING WITH DIFFERENT IDEs</b>	<b>5</b>
1.3.1	ADDING ELEGANTJ CHARTS TO BORLAND JBUILDER	5
1.3.2	ADDING ELEGANTJ CHARTS TO SUN JAVA STUDIO CREATOR IDE	8
1.3.3	ADDING ELEGANTJ CHARTS TO NETBEANS IDE	11
1.3.4	ADDING ELEGANTJ CHARTS INTO ECLIPSE EDITOR	16
1.3.5	ADDING ELEGANTJ CHARTS INTO SERVOY DEVELOPER	17
<b>1.4</b>	<b>GETTING AND USING THE LICENSE KEY</b>	<b>19</b>
1.4.1	HOW TO PURCHASE	19
1.4.2	CONFIGURING LICENSE KEY	19
1.4.2.1	Configuring with Graphical User Interface of IDE	19
1.4.2.2	Configuring Directly within Source Code	20
<b>2</b>	<b>SUPPORT INFORMATION</b>	<b>21</b>

# 1 Installation & Registration

---

## 1.1 Prerequisite

---

Before installing ElegantJ Charts, please ensure that your computer system and development environment are setup and working as per expectations. Person using ElegantJ Charts is expected to be able to write and execute simple JAVA applications.

To be able to use ElegantJ Charts, your computer systems are required to have:

- An IDE that supports JDK 1.4.0 or higher, or
- JDK 1.4.0 or higher.

## 1.2 Installation Procedure

---

On extracting EJCharts.zip, following directories will be created:

- Directory [jars] contains Jar file(s)
- Directory [demos] contains demo application(s) with source code
- Directory [docs] contains User Guide and Java API

### 1.2.1 Installing on Windows 95/98

---

To include ElegantJ Charts in CLASSPATH, add following statement to your autoexec.bat file,

```
Set CLASSPATH=%CLASSPATH%;C:\ELEGANTJCHARTS \jars\<CHART>.jar;
```

Restart Windows to get effect of changes made.

### 1.2.2 Installing on Windows NT/2000/XP

---

Go to Control Panel and select **System**. You will find environment variables under **Environment** tab in Windows NT systems and under **Advanced** tab in Windows 2000 systems.

Find CLASSPATH environment variable or create it.

To include ElegantJ Charts in the CLASSPATH, specify or add following value for variable –

```
[EXISTING-CLASSES]; C:\ELEGANTJCHARTS\jars\<CHART>.jar
```

### 1.2.3 Installing on Unix/Linux

---

Before you begin using ElegantJ Charts, you must manually configure CLASSPATH environment variable. CLASSPATH must point to the location of classes and installation directory.

For example, to set CLASSPATH for ElegantJ Charts,

```
setenv CLASSPATH ./usr/local/ELEGANTJCHARTS/jars/  
<CHART>.jar:
```

If you are using Bourne Shell, commands are,

```
CLASSPATH= $CLASSPATH:./usr/local/ELEGANTJCHARTS/jars/  
<CHART>.jar:export CLASSPATH
```

## **1.3 Using with Different IDEs**

---

ElegantJ Charts Library file(s) is located in the \jars\subdirectory.

Each IDE has its unique method for importing a Bean. This set of documentation contains guidelines for importing ElegantJ Charts to different IDEs. However, consult documentation for respective product to know how to import a Java Bean in an IDE.

ElegantJ Charts works well with any charts compliant Integrated Development Environment (IDE).

### **1.3.1 Adding ElegantJ Charts to Borland JBuilder**

---

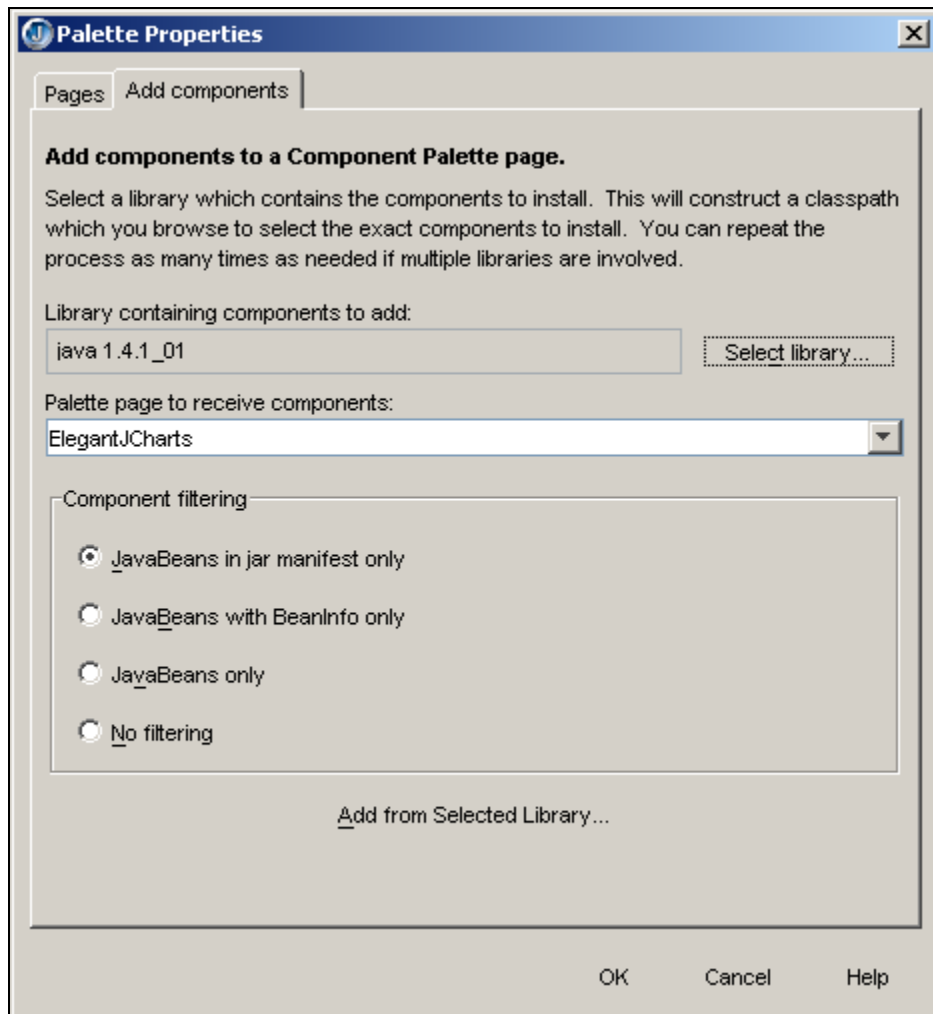
Follow the steps given below to create a new category and install the Bean into Borland JBuilder.

#### **Create a New Category**

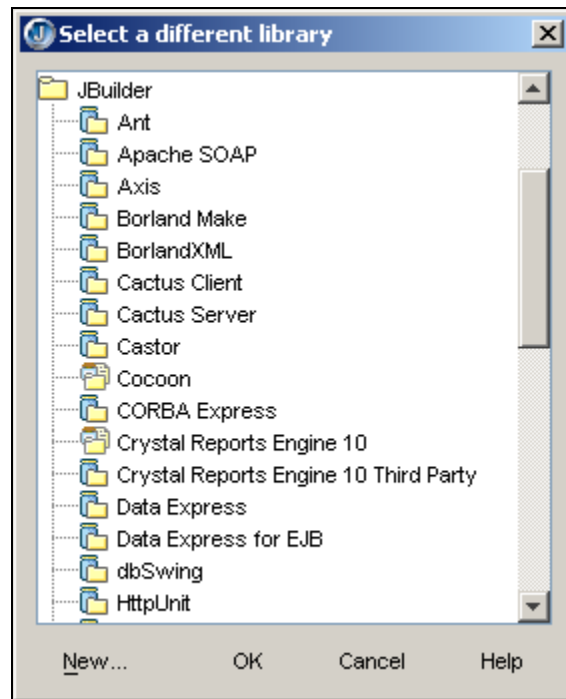
- Click menu **Tools > Configure Palette**. It opens Palette Properties dialog box.
- Click on **Add** button. It opens **Add Page** dialog box.
- Specify name (e.g., ElegantJ) and click on **OK** button.
- New Category will be created.

### **Create New Library and Install/Import Bean**

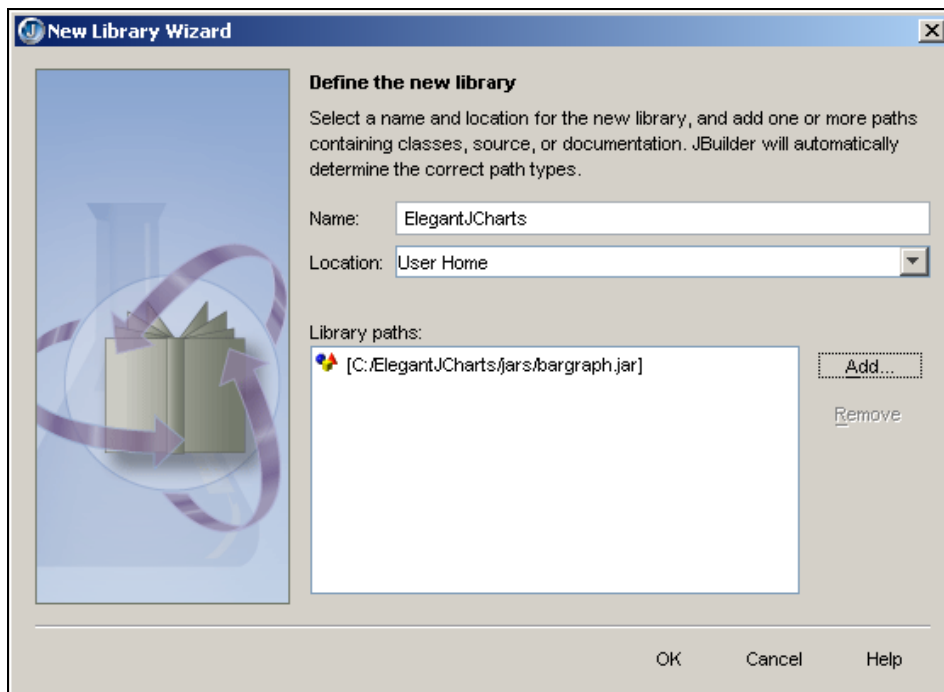
- On **Palette Properties** dialog box, click on **Add components** tab.
- Select newly created page (e.g., ElegantJ).



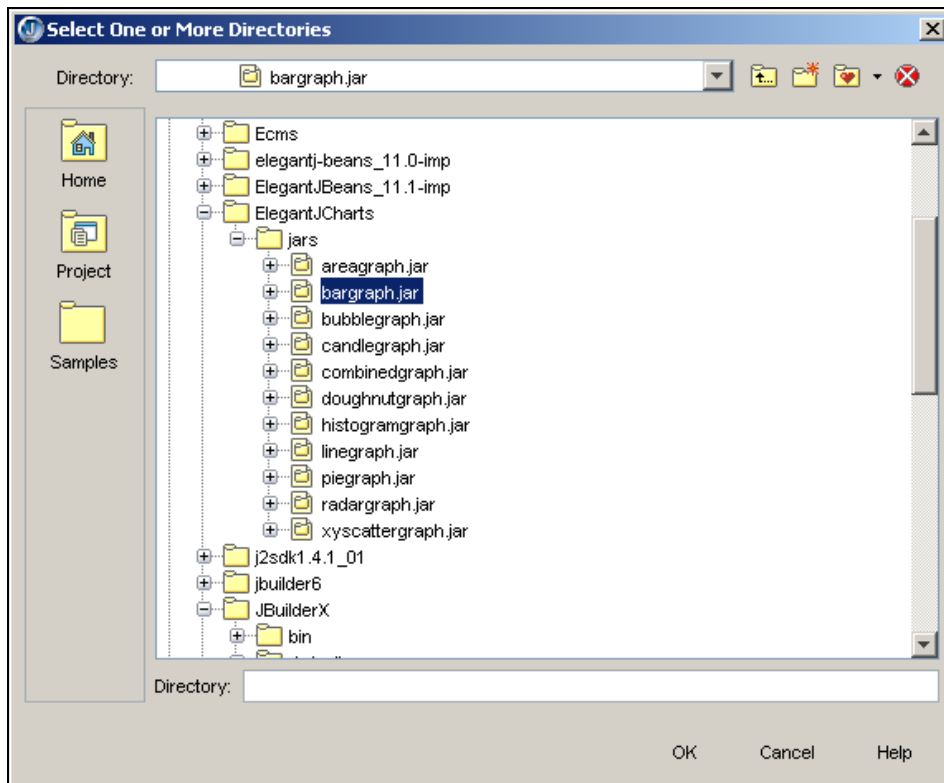
- Click on **Select Library** button. It opens **Select a Different Library** dialog box.



- Click on **New** button. It opens **New Library Wizard** dialog box.



- Specify name for library and click on **Add** button. It opens **Select One or More Directories** dialog box.

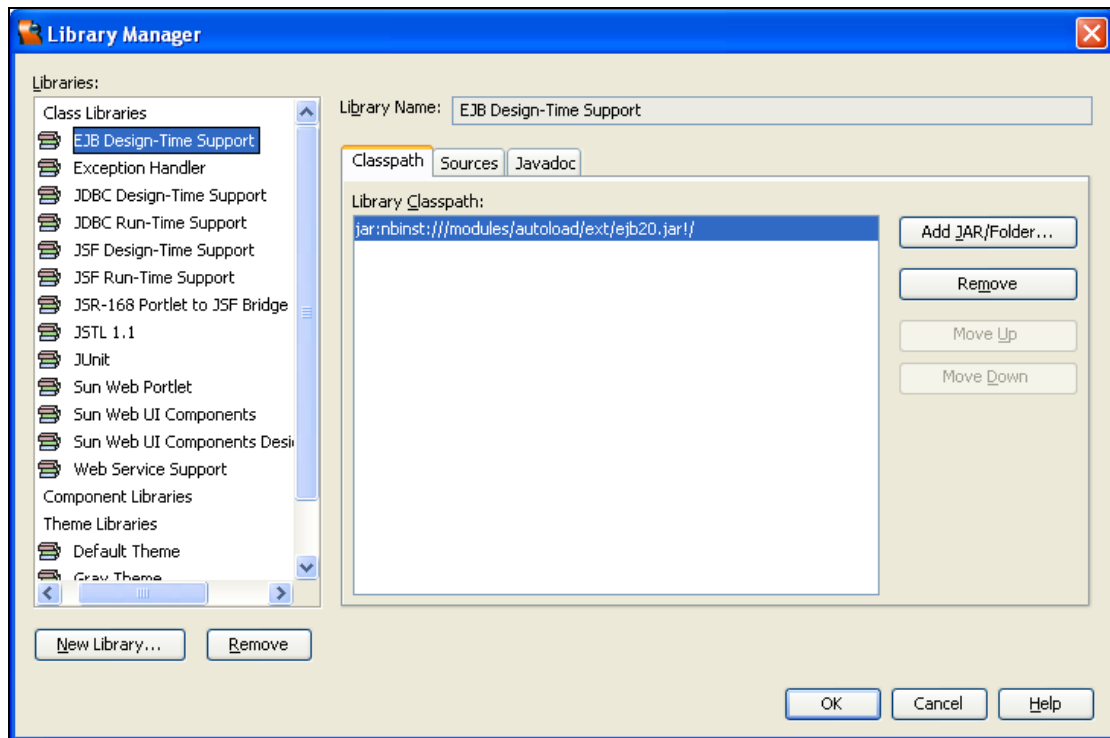


- Select directory where jar files are located, or select jar file to be imported. Click on **OK** button. Dialog box will be closed and **New Library Wizard** dialog box appears in front.
- Click on **OK** button on **New Library Wizard** dialog box. It opens **Select a Different Library** dialog box.
- Confirm that newly created library is selected. Click on **OK** button. It opens **Add Components** under Palette Properties.
- Click on **Add from Selected Libraries** button. It opens **Results** dialog box. Click on **OK** button.
- **Results** dialog box disappears. Click on **OK** button on **Palette Properties** dialog box.
- Charts are ready to be used.

### **1.3.2 Adding ElegantJ Charts to Sun Java Studio Creator IDE**

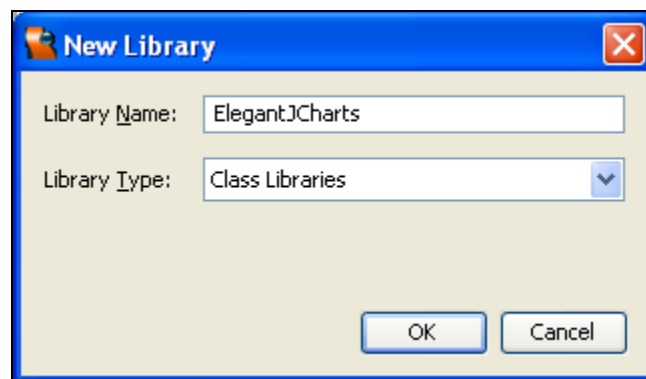
Follow the steps given below to create a new category and install Bean into **Sun Java Studio Creator 2**.

- Click menu **Tools>Library Manager**. It opens **Library Manager** dialog box.



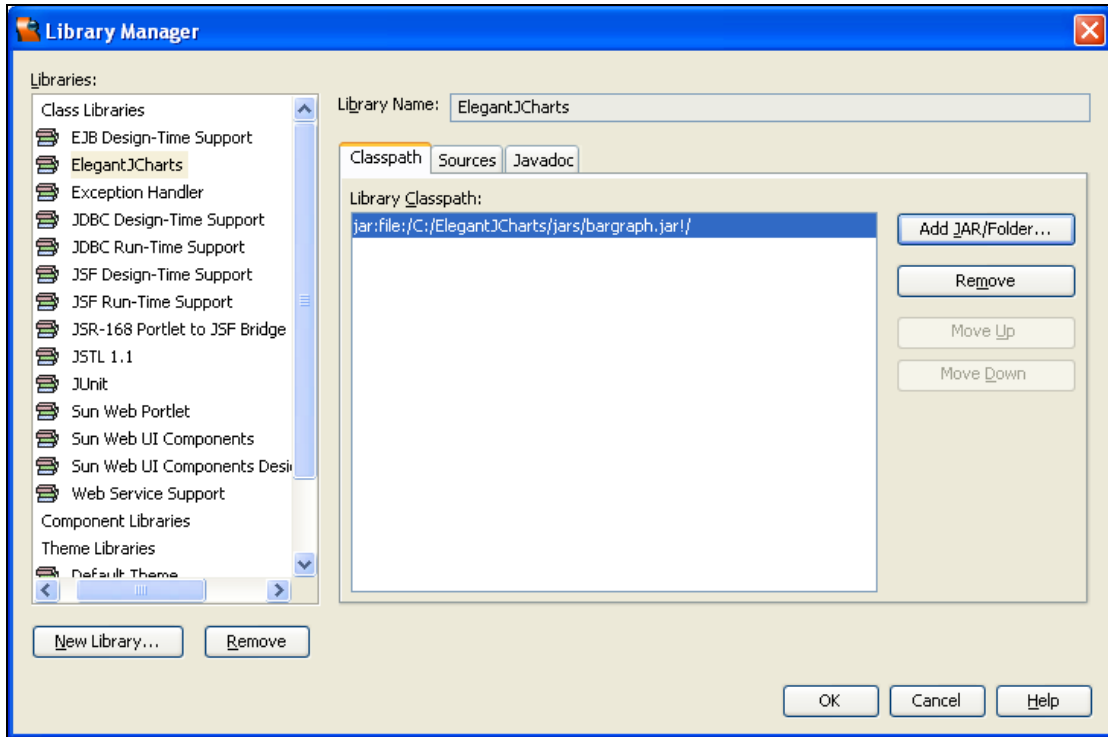
### **Create New Library**

Click on **New Library** button. It opens **New Library** dialog box. Write a Library Name and select Component Libraries from Library Type combo box. Click OK.



### **Load Component As a Jar File**

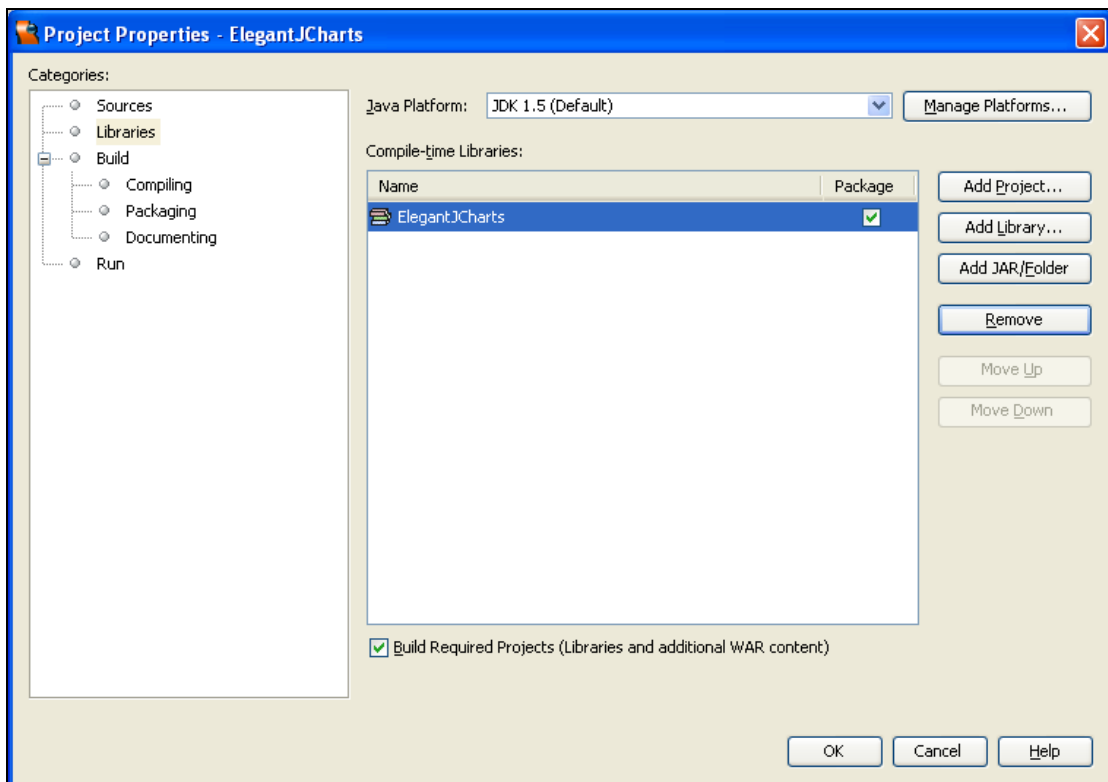
Click on **Add Jar/Folder** button. It opens **File** dialog box. Locate jar file (i.e. /ElegantJCharts/jars/bargraph.jar), and Click on **OK** button. The selected jar file appears in Library Classpath List.



- Click on **OK** Button.

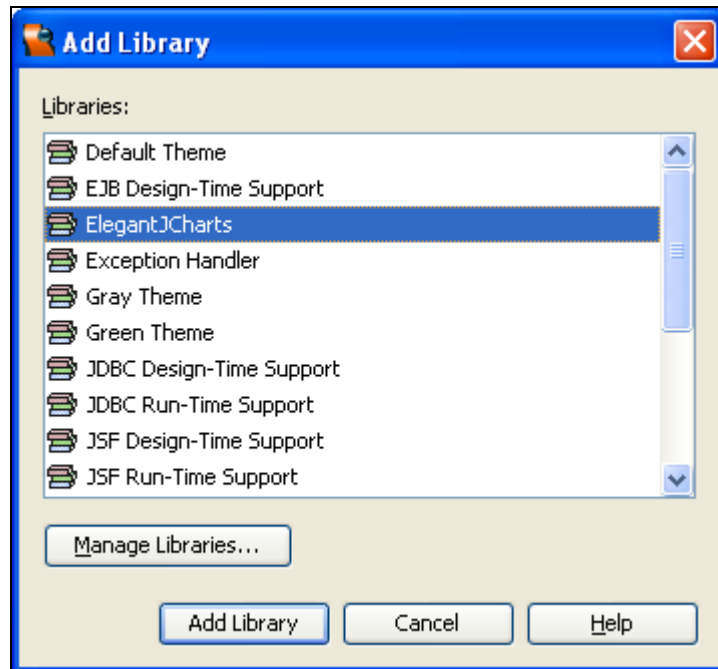
**Create a new Project. (e.g., ElegantJCharts)**

- Right click on Created Project (e.g., ElegantJCharts).
- Select property.
- **Project Properties** dialog box will open.



- Select **Libraries** from Categories tree on left pane.

- On right pane, click on **Add Library**.
- It opens **Add Library** dialog box.

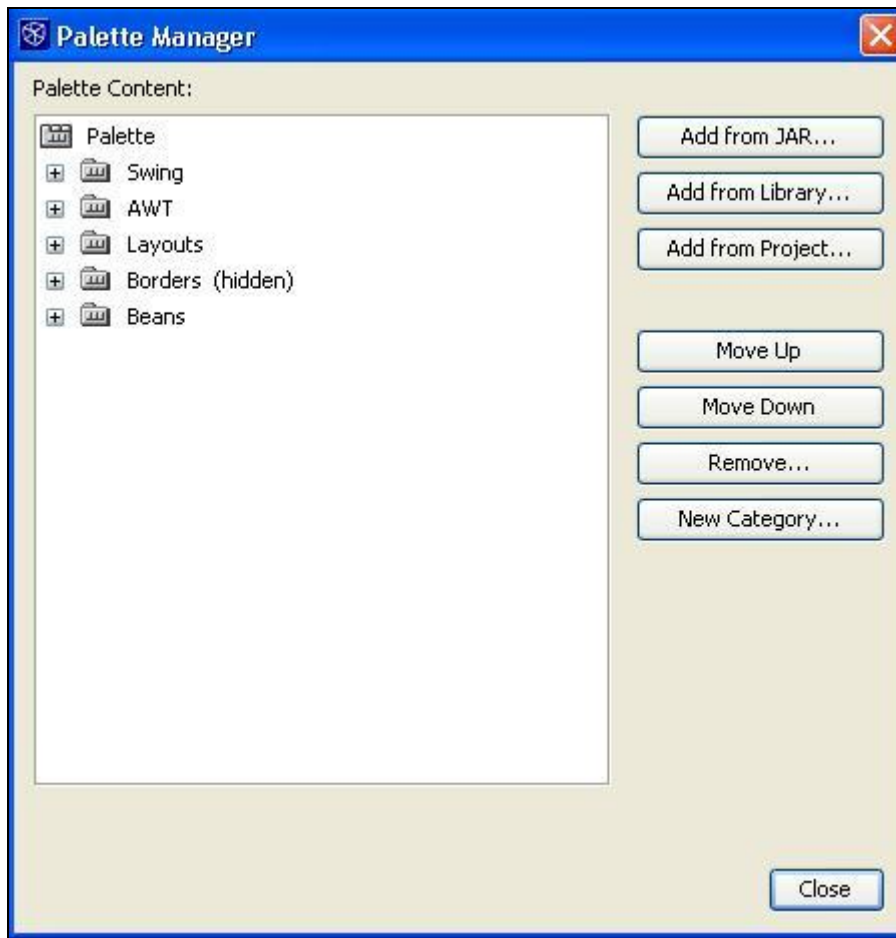


- Select a Library from list, which is created from **Library Manager**.
- Click on **Add Library** button.
- Click **OK** button on **Project Properties** dialog box.

### **1.3.3 Adding ElegantJ Charts to NetBeans IDE**

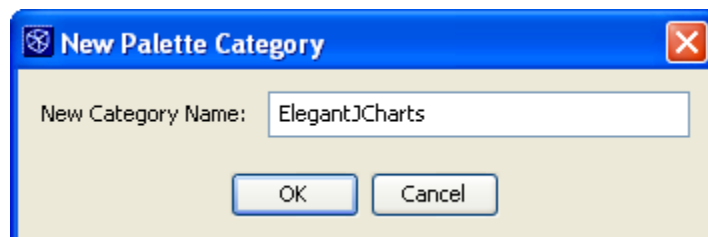
Follow the steps given below to create a new category and install Bean into NetBeans IDE.

- Click menu **Tools > Palette Manager**. It opens **Palette Manager** dialog box.

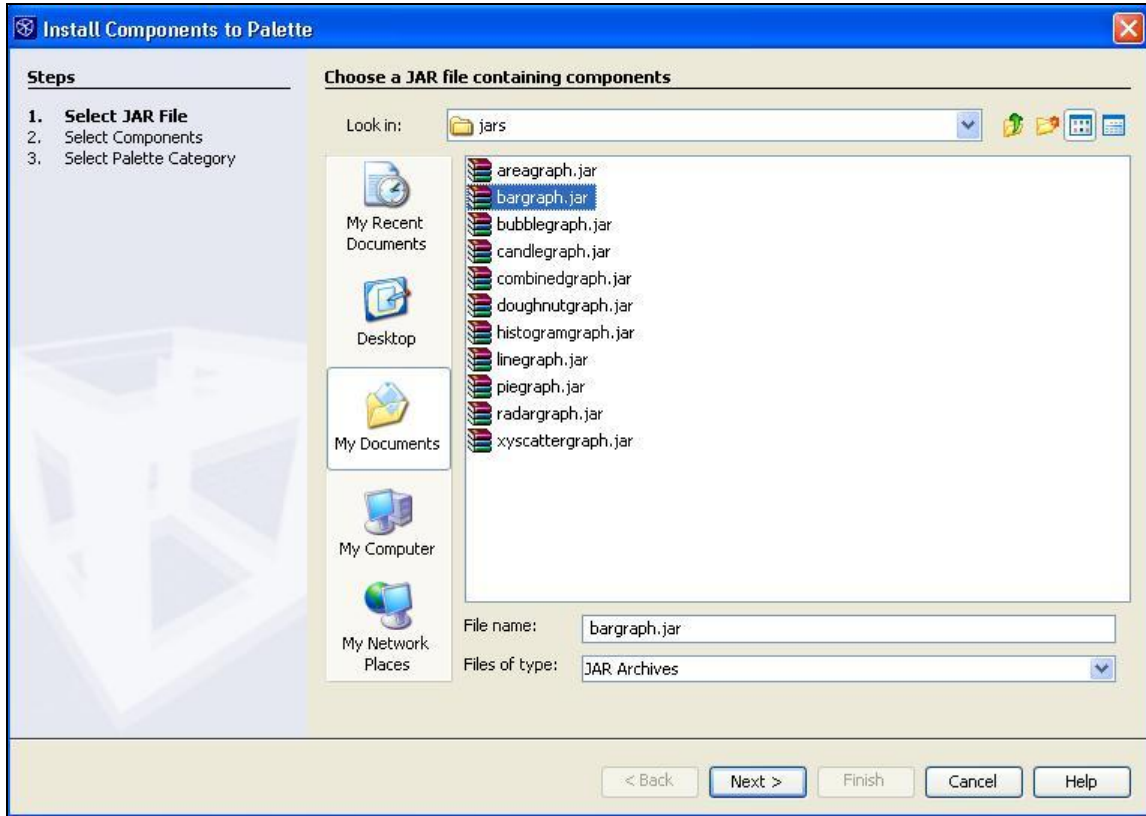


**Create New Category**

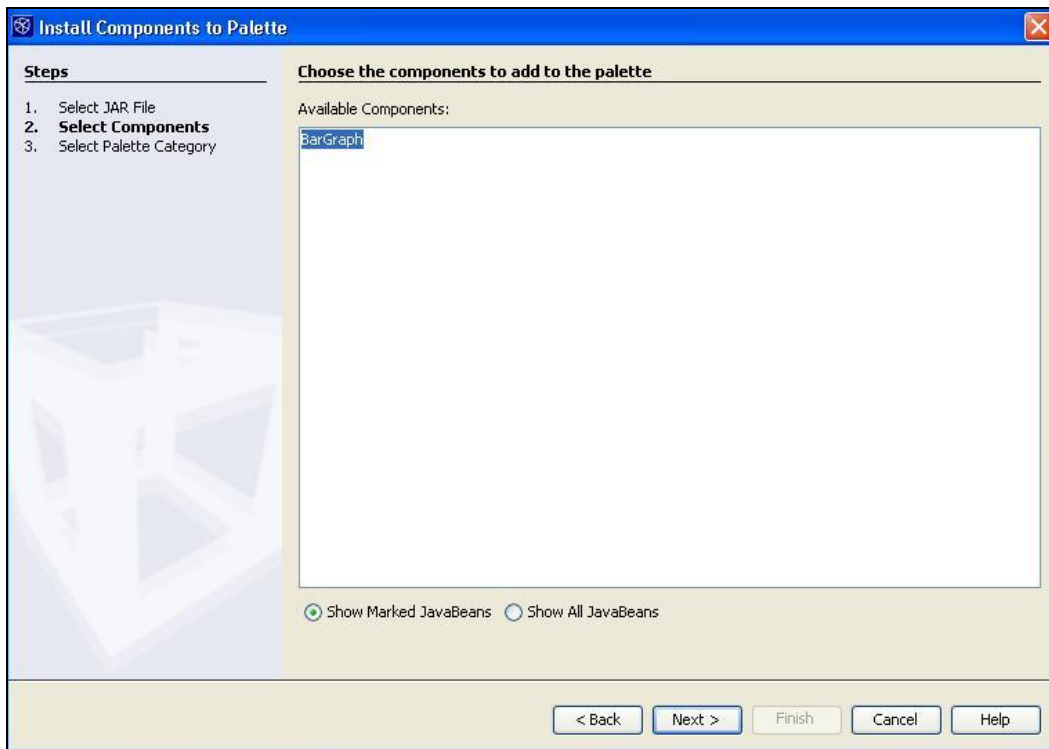
- Click on **New Category** button.
- It opens **New Palette Category** dialog box. Write a New category Name and Click on **OK** button to add a category name into Palette Manager.



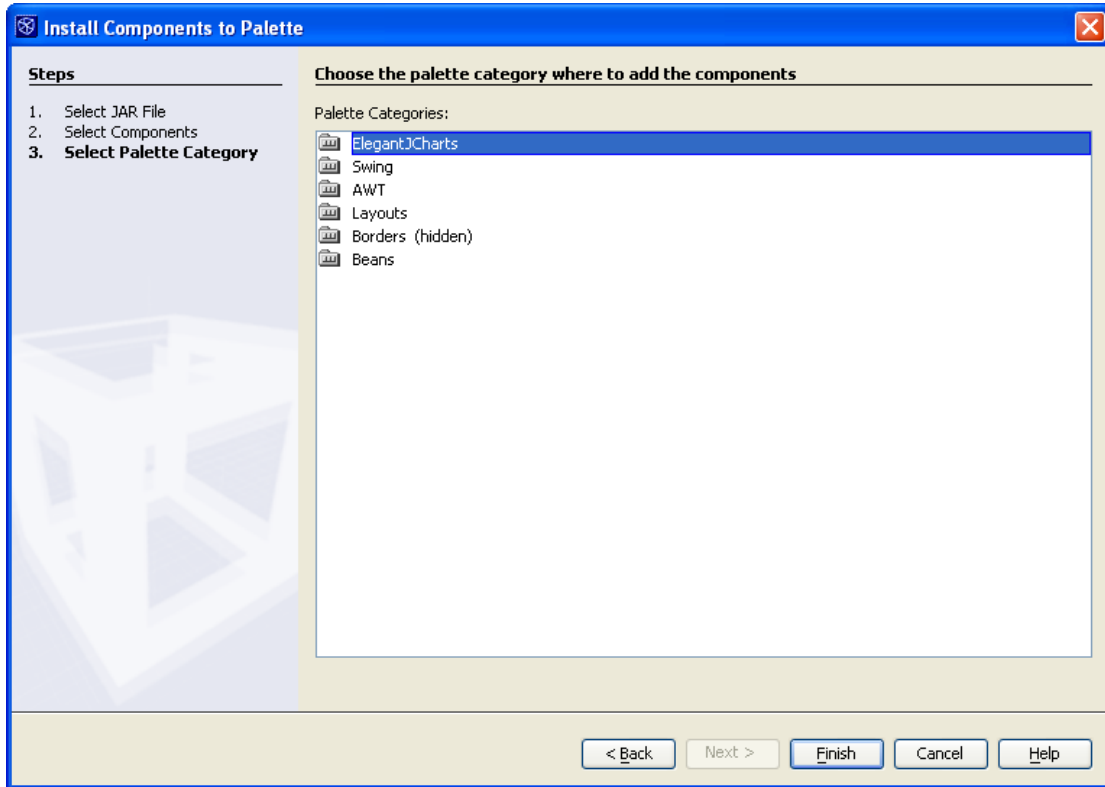
- Click on **Add From Jar** button. It opens **Install Component to Palette** dialog box.



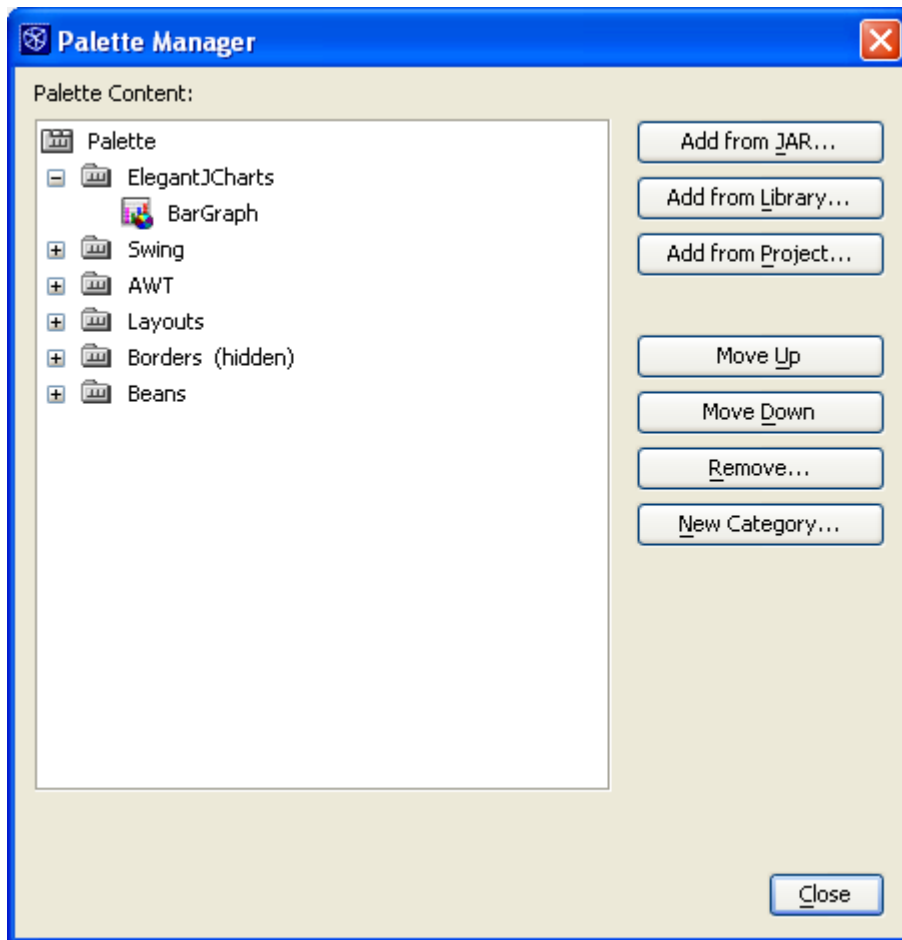
- Choose a component from Available Components list.
- Click on **Next** button.



- Locate/Choose a jar containing components (for example /ElegantJCharts/jars/bargraph.jar).
- Click on **Next** button.



- Select the Palette Category to add the components.
- Click on **Finish** button.



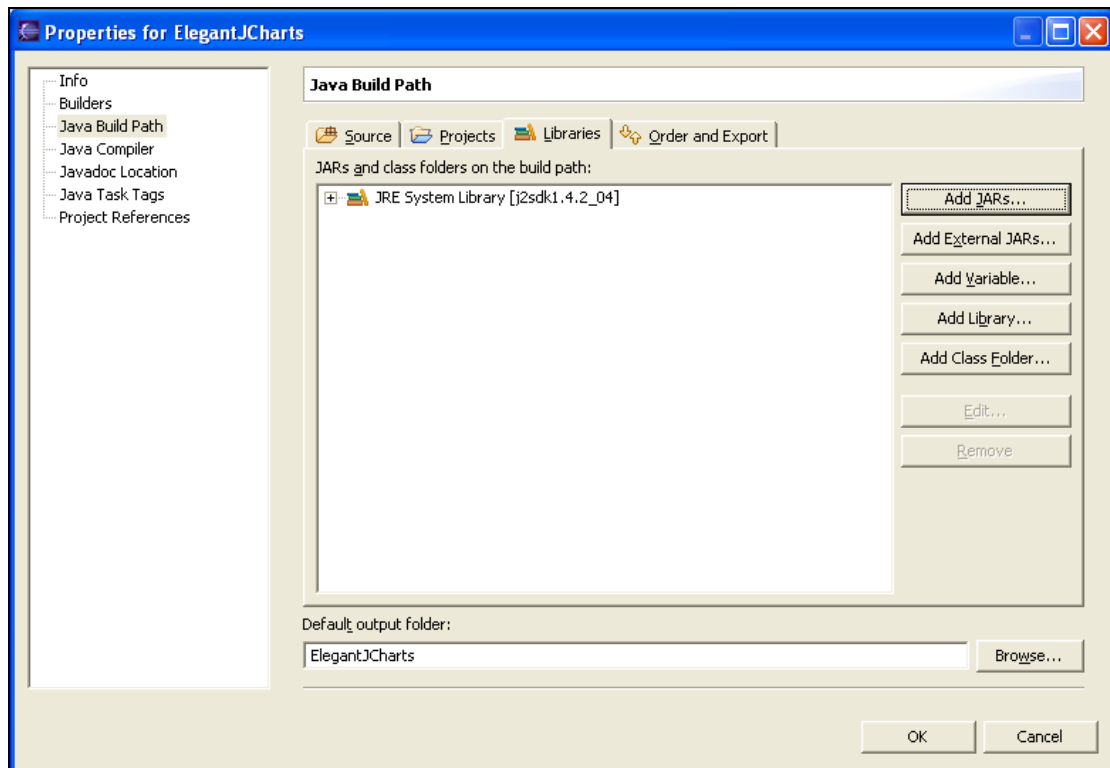
- The component is added into the selected Palette Category.
- Click on **Close** button.

### 1.3.4 Adding ElegantJ Charts into Eclipse Editor

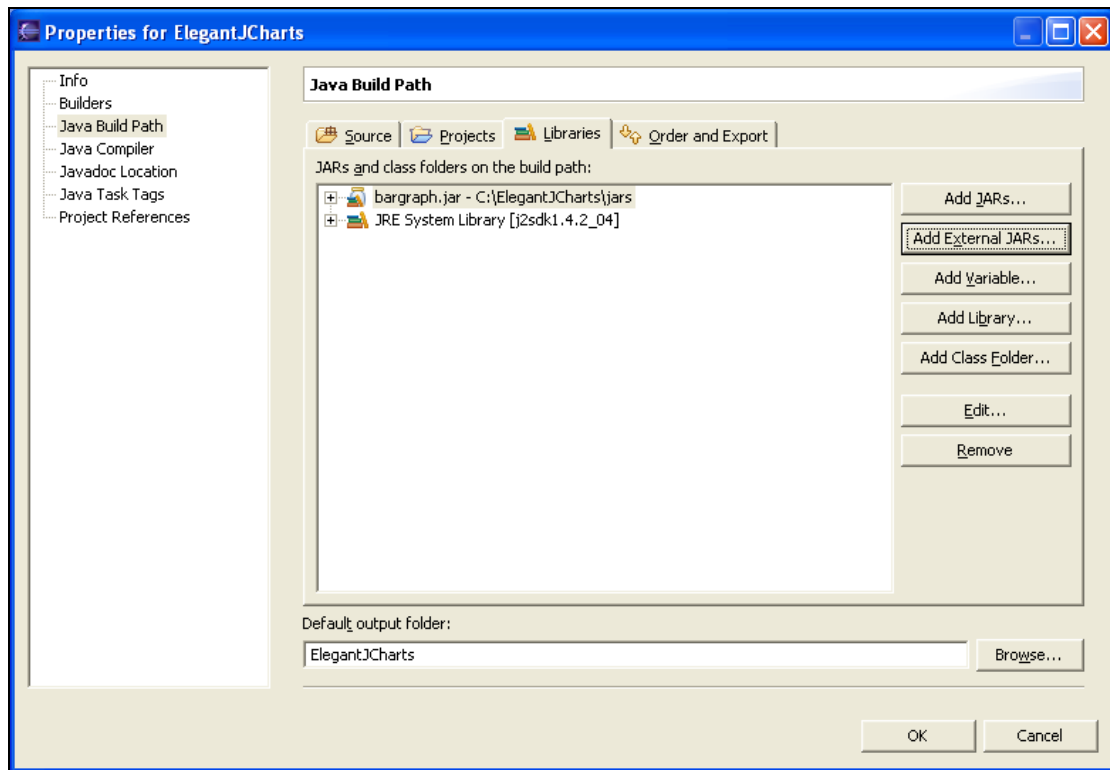
Follow the steps given below to create a new category and install Bean into **Eclipse Editor**.

#### **Create New Project (i.e. ElegantJ Charts)**

- Right click on Created Project (right click on ElegantJ Charts). It opens **Properties** dialog box for Project (i.e. ElegantJ Charts)



- Select **Java Build Path** from Left pane tree.
- On right pane, click on **Libraries** tab and click on **Add External JARs** button.
- It opens **File** dialog box, locate a jar file.
- Click on **OK** button on **File** dialog box.

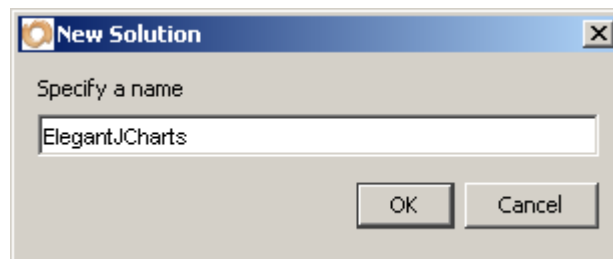


- The located jar file is displayed into the list.
- Click on **OK** button on **Properties** dialog box.

### **1.3.5 Adding ElegantJ Charts into Servoy Developer**

Follow the steps given below to install bean into Servoy Developer.

- Copy all the chart beans jar files from [jar] directory created on extraction of downloaded zip file.
- Locate and paste all the chart bean jar files in the [Beans] directory in the installed Servoy Developer IDE directory.
- Now open the Servoy Developer. Go to **File >> New Solution**. Enter the solution name 'ElegantJCharts' and click on **OK**.



- New Form screen opens. Select a server from Using Server. Select a table from Using existing table list or create new table. Click on **OK**.

**New Form**

Using Server: example\_data

Using Style: -none-

Form Name:

Using existing table:

- book\_nodes
- book\_text
- categories
- chat\_users
- customers

New table:

Name:

OK Cancel

- Select fields and click on **Ok**.

**Specify Field(s)**

DataProviders for categories

**columns**

- categoryid
- categoryname
- description
- picture


Place labels

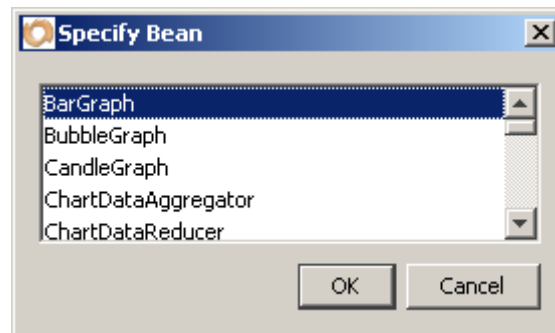
Place horizontal

Fill text property

Fill name property

OK Cancel

- Now Click on  **Place Bean** button on toolbar. Select a particular chart bean from the list and click on **Ok**.



- You are ready to use ElegantJ Charts Library with Servoy Developer IDE.

## 1.4 Getting and Using the License Key

---

### 1.4.1 How to Purchase

---

You can purchase a license from our Web site <http://www.elegantjcharts.com>. You can also contact our sales team [sales@elegantjcharts.com](mailto:sales@elegantjcharts.com).

On purchasing a license, you will receive a mail having your license key.

### 1.4.2 Configuring License Key

---

License key can be applied to ElegantJ Charts using any of the following ways:

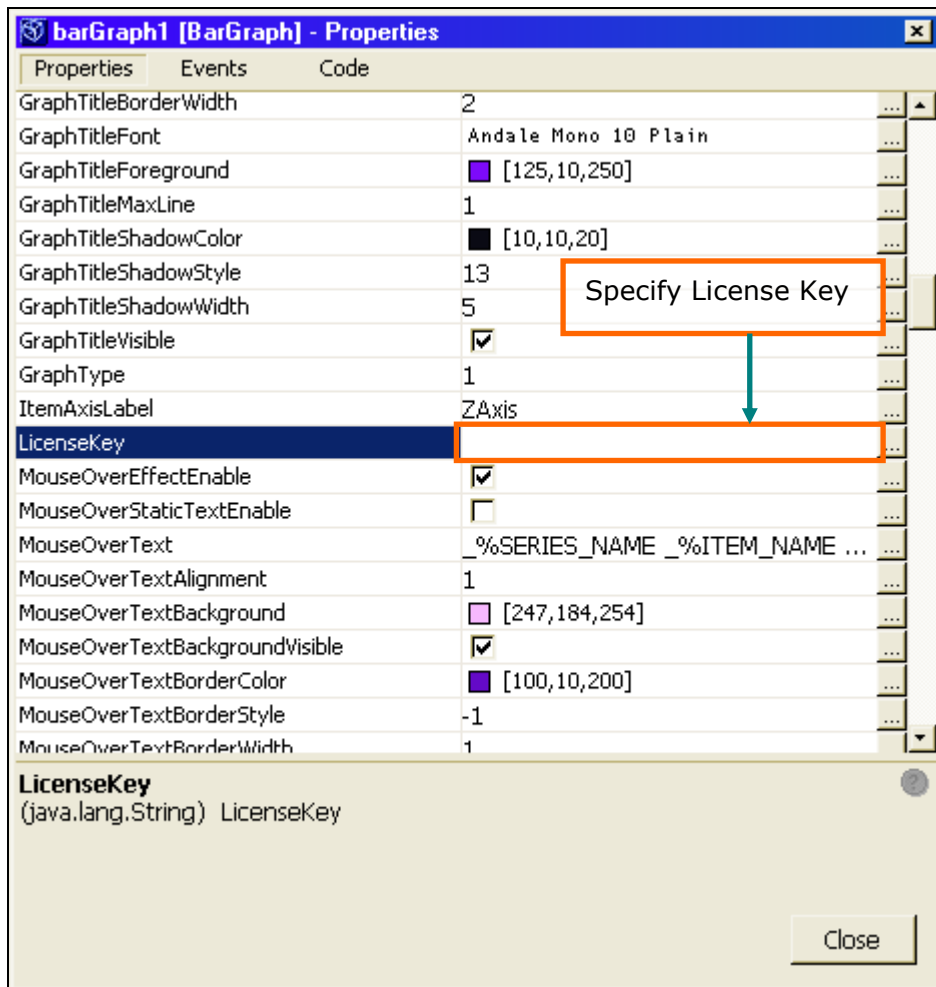
- Configuring with IDEs.
- Configuring directly with source code.

#### 1.4.2.1 Configuring with Graphical User Interface of IDE

While designing an application or an applet graphically in an Integrated Development Environment, you will find a property named **License Key** along with other properties of the Bean. Specify key (serial number) in License Key Property.

**Note:**

Instead of typing the license key, we suggest you to copy the license key from mail and paste it at required place. Make sure that the selection does not have any leading or trailing spaces.



### 1.4.2.2 Configuring Directly within Source Code

When you use the Bean within code, you need to set the key by providing value in **setLicenseKey** method.

**Note:**

Instead of typing the license key, we suggest you to copy the license key from mail and paste it at required place. Make sure that the selection does not have leading or trailing spaces.

```
ChartClassName object = new ChartClassName();
object.setLicenseKey("LICENSE_KEY");
```

Example

```
BarGraph graph = new BarGraph ();
graph.setLicenseKey("LICENSE_KEY");
```

## **2 Support Information**

---

### **Product & Support Information:**

- You can find more information about ElegantJ Charts and it's features on [www.ElegantJCharts.com](http://www.ElegantJCharts.com).
- Forward your support related queries to [support@ElegantJCharts.com](mailto:support@ElegantJCharts.com).
- Forward your sales related queries to [sales@ElegantJCharts.com](mailto:sales@ElegantJCharts.com).

### **Feedback and Suggestions:**

- We will be pleased to get your feedback as well as suggestions about our products.
- Forward your feedback or suggestions to [support@ElegantJCharts.com](mailto:support@ElegantJCharts.com).